

Fast Track Estimating System

Version EST-ST3-4W.lbs

What's New?

2009

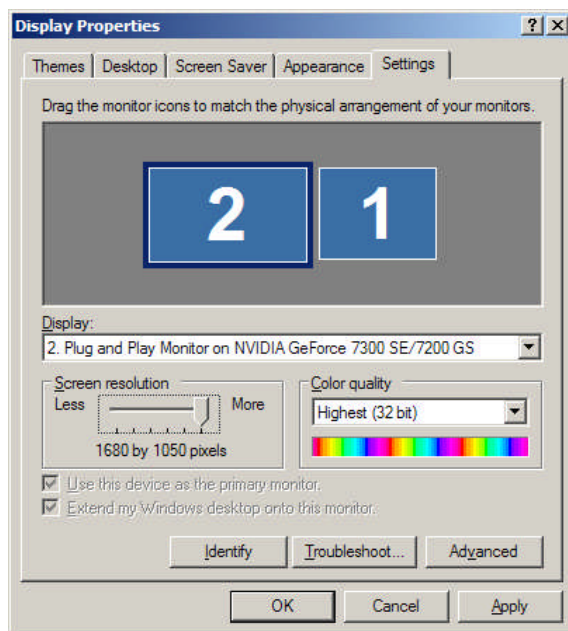
“Fast Track Estimating System” has been updated. These changes are to improve the systems functionality and efficiency. To install these updates refer to the attached “Installation Instructions” document.



Things Added

Wide Screen Set Up

The system is now designed for the newer wide screens. Please do not install if you do not have at least a resolution of 1280x960 pixels for use on 3:4 ratio screens.



Fields Improvements

By request some fields were added and some were extended to include more characters.

The examples are as follows:

(New!) Tender Number has a new field called ‘External Est No’

Tender No	Dept	External Est No	Tender Description

(New!) Tender Number has a new field called 'Time'

Front Sheet Last Updated :-

Closing Date	Time	Date Received

(New!) Est Sections window has a new field called 'Cust Sect No'

Estimate Sections window has been modified so you can now enter the Customer's Section Number.

Section No	Cust Sect No	Description

(New!) Est Input windows have a longer 'Description' field.

Sect	Catalogue Number	Description

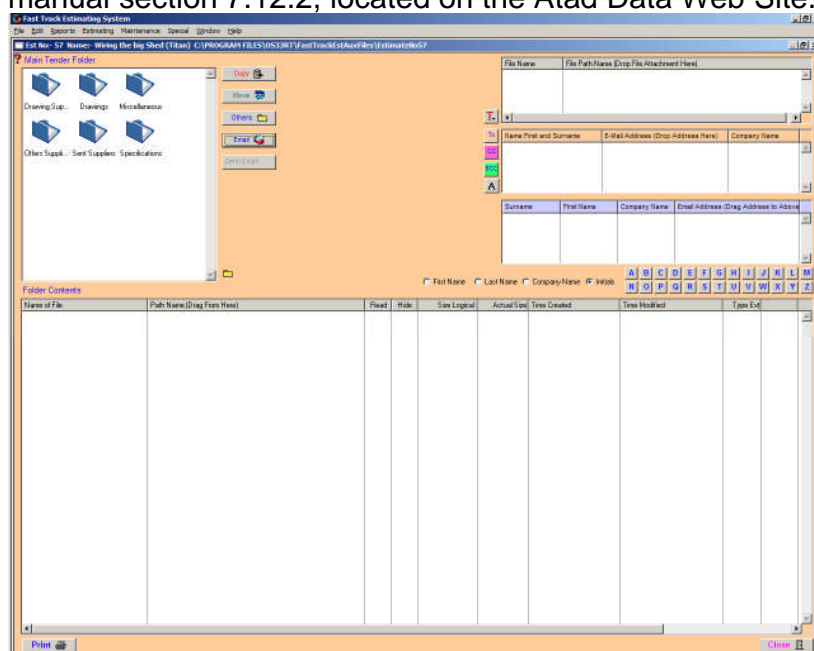
Now Longer Size !

Address Book is compatible with Microsoft Outlook

Some of the features that have been added are compatible with Microsoft Outlook. This allows the user to build a new Address Book directly from Outlook. This feature is located in the Address Book Window. (Right click on the table.) You can now send your e-mails via Outlook system using the Microsoft automation. This has been added because some servers do not allow SMTP (Simple Mail Transfer Protocol).

Tender Documents

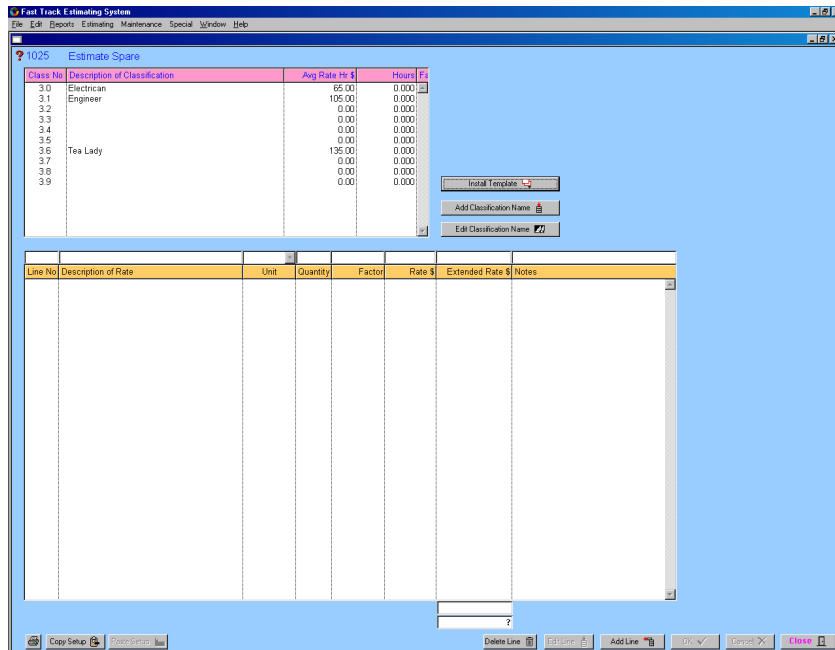
The Tender Documents window now has new features. This window allows for the redistribution of files via e-mail. To view these changes please see the Fast Track manual section 7.12.2, located on the Atad Data Web Site.



The intent of this window is to give the Estimator a tool to manage files specifically associated with the estimate. The window also allows for the quick and official redistribution of files via e-mail.

Project Rates

The Project Rates screen is used to calculate an average hourly rate. The window provides an hourly rate for labour applicable to the project. The **Project Rates Button** is located in the Tender Number Screen.



Project Rates

Many projects have special allowances and different working hours so there is a need to document, compile and produce an hourly rate to be used in the Front Sheet.

The Project Rates Window consists of two screens, the **Summary Screen** and the **Calculation Screen**.

The Summary Screen displays Labour Classifications. An Estimator has an option to install template, edit the template or create a new labour classification and edit an existing classification.

The Calculation Screen is used to calculate an average hourly rate for specific labour classification. The average hourly rate calculated in the Calculation Screen is displayed in the Summary Screen. The Average Hourly Rate calculations can be edited in this window at any time. If the information is modified the program will automatically update an **Average Hourly Rate** in the **Summary Screen** and **Front Sheet**.