
Section 1

Overview

Kontrol Pro offers the following features:

1.1 Basic Aim

The prime reason for the development of Kontrol Pro, was to provide a tool to manage cables schedules, instead of use of spread sheets. Kontrol Pro works is in a data base type format and giving all the advantages of a database. The advantages being multiple users at the same time.

The prime function is the Cable Schedule, however the ancillary functions that go with the cable schedule are as follows:-

- Data integrity checking.
- Drum management.
- Commissioning Sheets.
- Addendum management.
- Progress management financial.
- Cable Tag List.
- Wiring ferule list.



There many other functions Kontrol Pro (KP) now has.

1.2 Who Can Use Kontrol Pro

Estimators, Electrical, Civil and Mechanical Contractors, Design Teams and Project Administrators.

In other words KP can be used to develop the project from concept to design then to construction, and after that used in company asset management.

1.3 How it Works

A Project Number is generated. Whilst the equipment list is being entered, an automatic tag system is generated to enable tracking of the object (piece of equipment) throughout the project. The next part of the project is to establish if the object requires air, electrical or water services, etc.

All information can be uploaded into KP using DDE import function. And some reports are also generated in Microsoft automation format.

:



From this we generate the following schedules:

- Cables Block Diagrams.
- Cable schedules.
- Pipe schedules.
- PLC schedules.
- Cable terminations schedules.
- Drawing schedules.
- Switchboard schedules.

1.4 The System Intent

The advantages of the system are to eliminate documents scattered throughout a local area network by providing up-to-date live information to many users at the same time. Efficient coordination is the key to any projects success. Kontrol Pro's strongest point is to cope with rapid changes.



1.5 Document Management

Kontrol Pro has a document management system relating to drawings and electronic files. It also manages information electronically for equipment. Documents can found very quickly using various searches. This is an advantage when other documents systems are bogged down with slow networks.

1.6 System Requirements

The computer system requires at least 3.0 GHz and disc space of at least 500 Giga Bytes for the Data Files. Screen size should be at least 24" working on 1080 x 1920 pixels or above.

The Operating system can be of the Windows Microsoft family. Macintosh and Linux systems can also be used.

1.7 Network LAN

The network speed should be 100 Mbps or above TCP / IP.

1.8 Software Configuration

The software can be structured in two different configurations. The single license user is designed for an individual computer. The multi user license is designed for a local area network and is dependent on the amount of traffic using the main database.

1.9 System Security

Kontrol Pro has also an internal security system, this enables the appointed administrator to lock certain users out of various parts of the program.

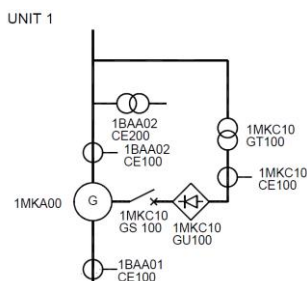
2.0 This Manual

The manual is provided in loose-leaf format so that any updates and improvements can be reflected in the manual. The manual is a controlled document to those organisations that subscribe to Atad Data down load the update from our WEB site.



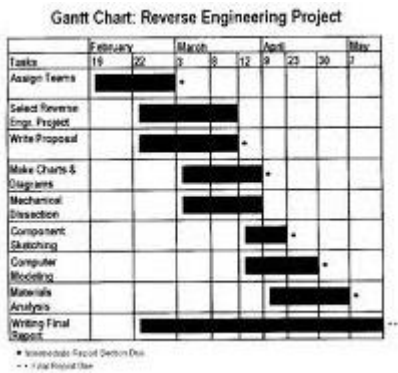
2.1 Web Version

The system has limited screens available to a web server. This means for example if the design was being done in a central office and the users on a remote site wanted access to the cable schedule, then this also achievable. Note this is under development.



2.2 Tag Number System

KP can also manage Tag numbers to their generation in various standards. Changes such as the renaming of a tag will automatically change in Cable schedule, PLC schedule and Piping schedule.



2.3 Gantt Charts

KP can also use the existing information by adding a few dates to generate estimated against actuals progress results.

Notes