

Kontrol Project



ATAD DATA

Chris Hughes & Associates

**3 Springwell Avenue
Springwood QLD 4127
Brisbane (Australia)**

Telephone: (07) 3208 6347
Mobile: 0409 263 349

Email: ataddata@bigpond.net.au

Website: <http://ataddata.com.au/>

Welcome to Kontrol Pro (Project)

Kontrol Pro runs on a Postgres SQL data base, Postgres is able to run on 3 platforms being Windows Macintosh and Linux.



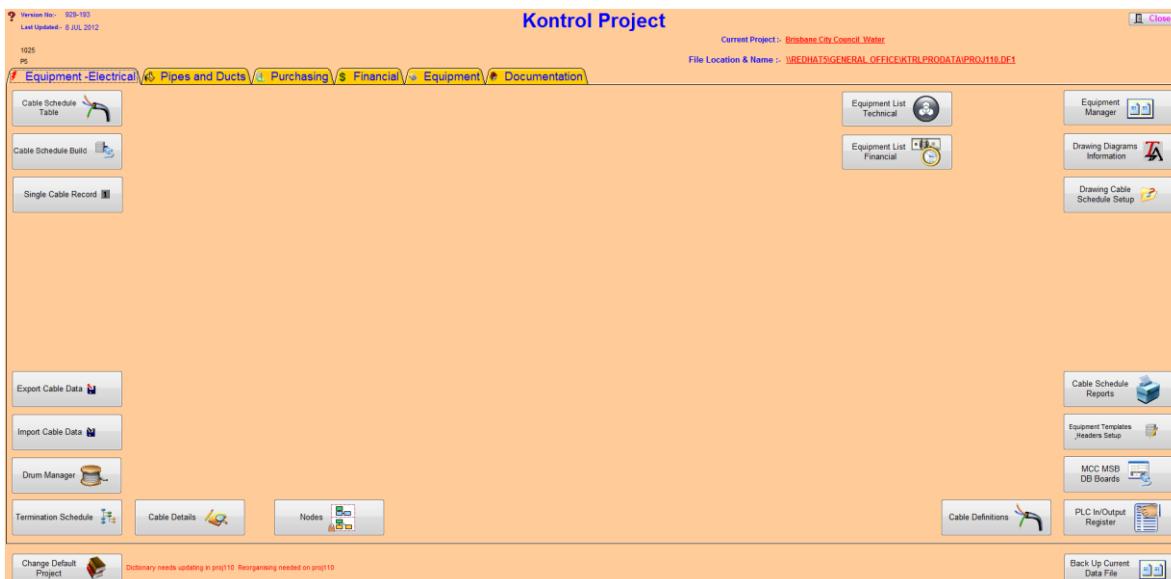
PostgreSQL

Postgres gives Kontrol Pro better performance over LAN's and WAN's , and gives quicker back times.

How this Manual is arranged

The manual has been set out to provide detailed explanation on particular screen functions and is laid out based on the Navigation Screen – Tab Panels

- Equipment – Electrical
- Pipes and Ducts
- Purchasing
- Financial
- Equipment
- Documentation



Index

Page No.

SECTIONS

Section 1

Overview	1
1.1 The Basic Aim.....	1
1.2 Who Can use Kontrol Pro	1
1.3 How it Works.....	1
1.4 the System Intent	1
1.5 Document Management.....	1
1.6 System Requirements.....	1
1.7 Network	2
1.8 Software Configuration	2
1.9 This Manual	2

Section 2

System Information	1
2.1 The System	1
2.2 Fonts	2
2.3 Omnis Studio Specifications	2
2.4 How to Update your Program	2
2.5 License Agreement	3
2.6 Trade Names	6
2.7 Miscellaneous Information	7
2.7.1 Calculations	7
2.7.2 Explanation of Data Files, Files, Records, Fields, List & Tables	7

Section 3

Installation or Re-Installation	1
3.1 About Omnis Studio Runtime	1
3.2 Kontrol Pro	1
3.3 Windows Re-Installation	3
3.4 Serial Numbers	5

Section 4

Menu Bar	1
4.1 File Menu	1
4.2 Edit Menu	6
4.3 Site Manager Menu.....	8

Index

Page No.

Section 5

Redirect	1
--------------------------------	---

Section 6

Getting Started	1
6.1 Security	1
6.2 The Navigation Screen	2
6.3 Current Project	2
6.4 Change Default Project	2
6.5 File Location & Name	3

PROGRAM CATEGORIES

Panel 1 - Equipment

Equipment - Electrical	1
1.1 Cable Schedule Table	2
1.2 Cable Schedule Build	15
1.3 Single Cable Record	16
1.4 Export and Import Cable Data	17
1.5 Drum Manager	19
1.6 Termination Schedule	20
1.7 Cable Details	22
1.8 Nodes	23
1.9 Cable Definitions	26
1.10 Equipment Manager	29
1.11 Drawing Diagrams Information	36
1.12 Drawing Cable Schedule Setup	37
1.13 Cable Schedule Reports	38
1.14 Equipment Templates Setup	39
1.15 PLC In/Output Register	41

Panel 2 – Pipes and Ducts

Pipes and Ducts	1
2.1 Pipes and Ducts Schedule	2
2.2 Pipes and Ducts Preferences	3

Panel 3 - Purchasing

Index

	Page No.
Purchasing	1
3.1 Description Purchase Orders	2
3.2 Multiline Purchase Order	5
3.3 Order Review	9
3.4 Suppliers	10

