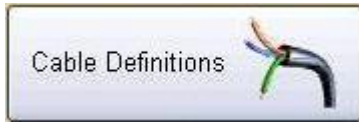


Category 1

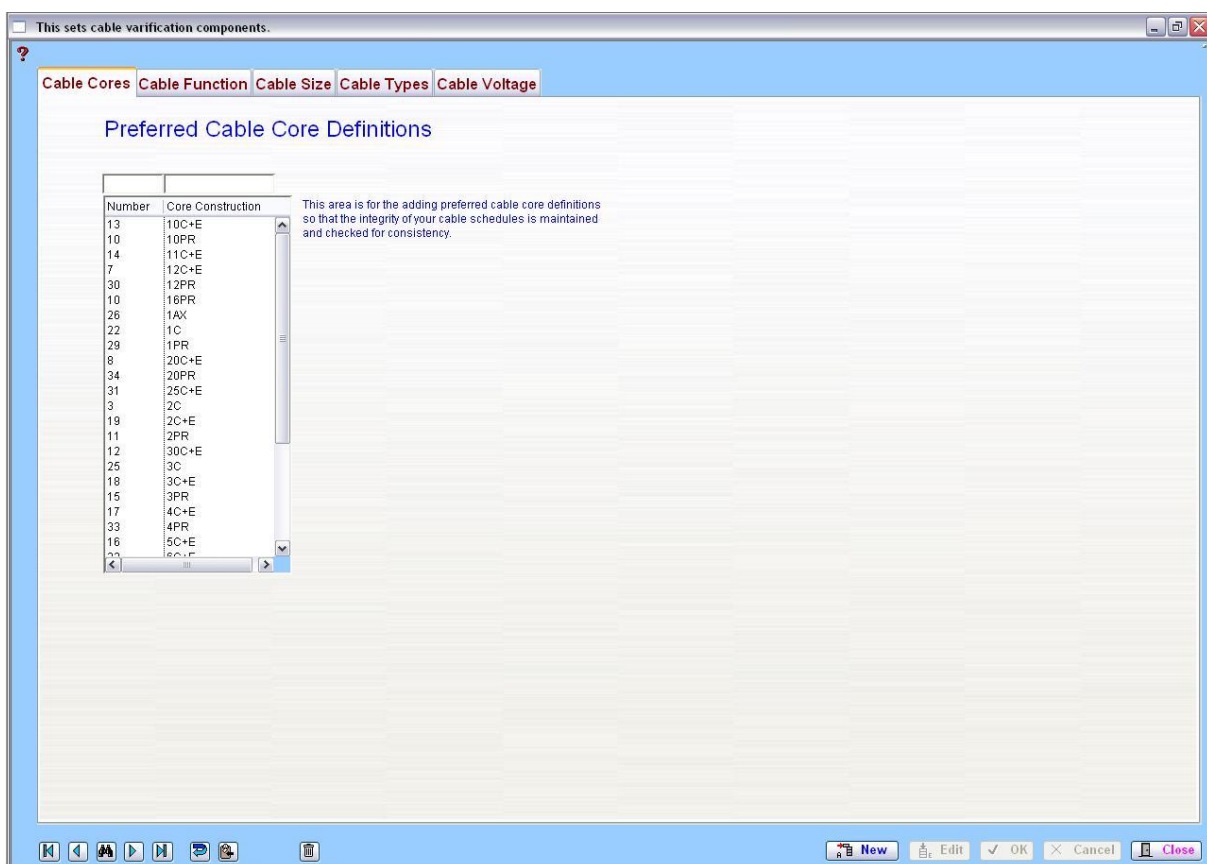
1.11 Cable Definitions



This opens a Tab panel window that allows the user to enter all the aspects of a cable construction such as size insulation etc.

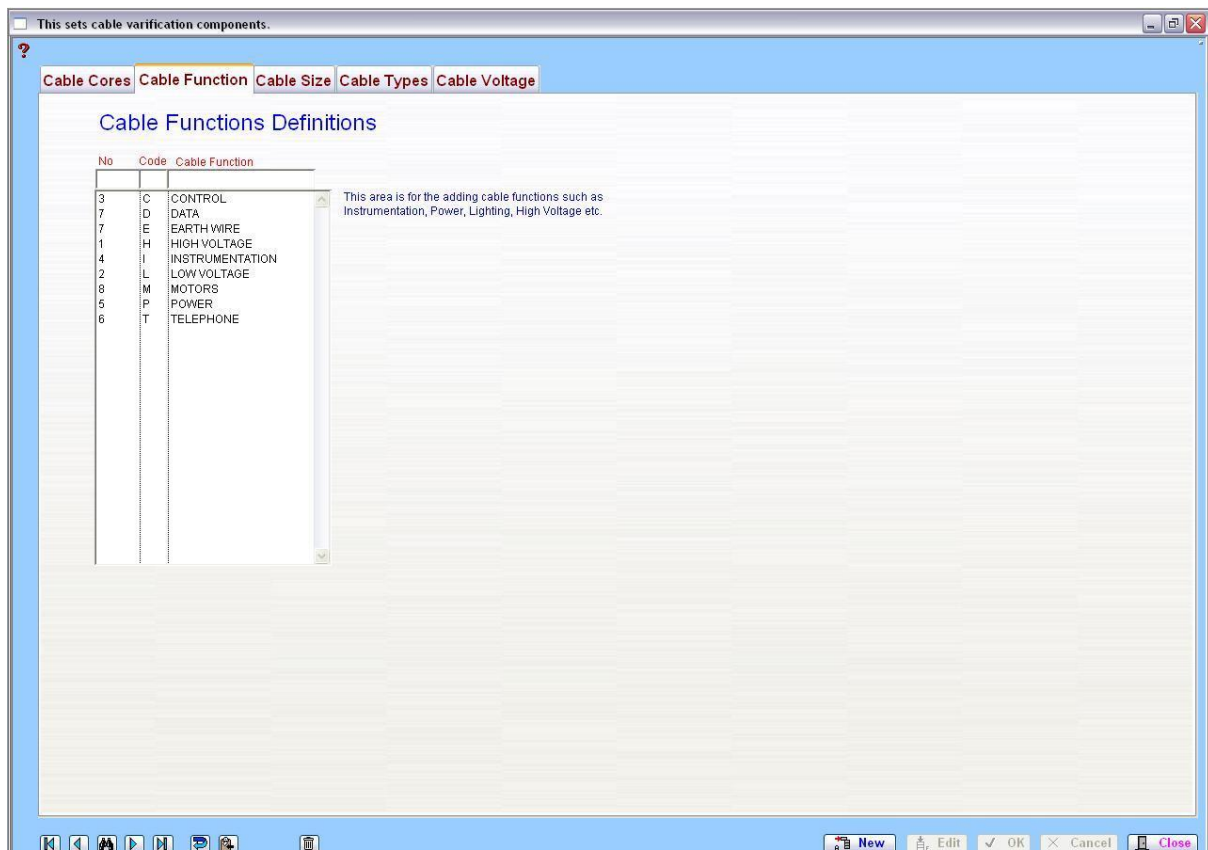
1.11.1 Cable Cores

This area is for the adding preferred cable core definitions so that the integrity of your cable schedules is maintained.



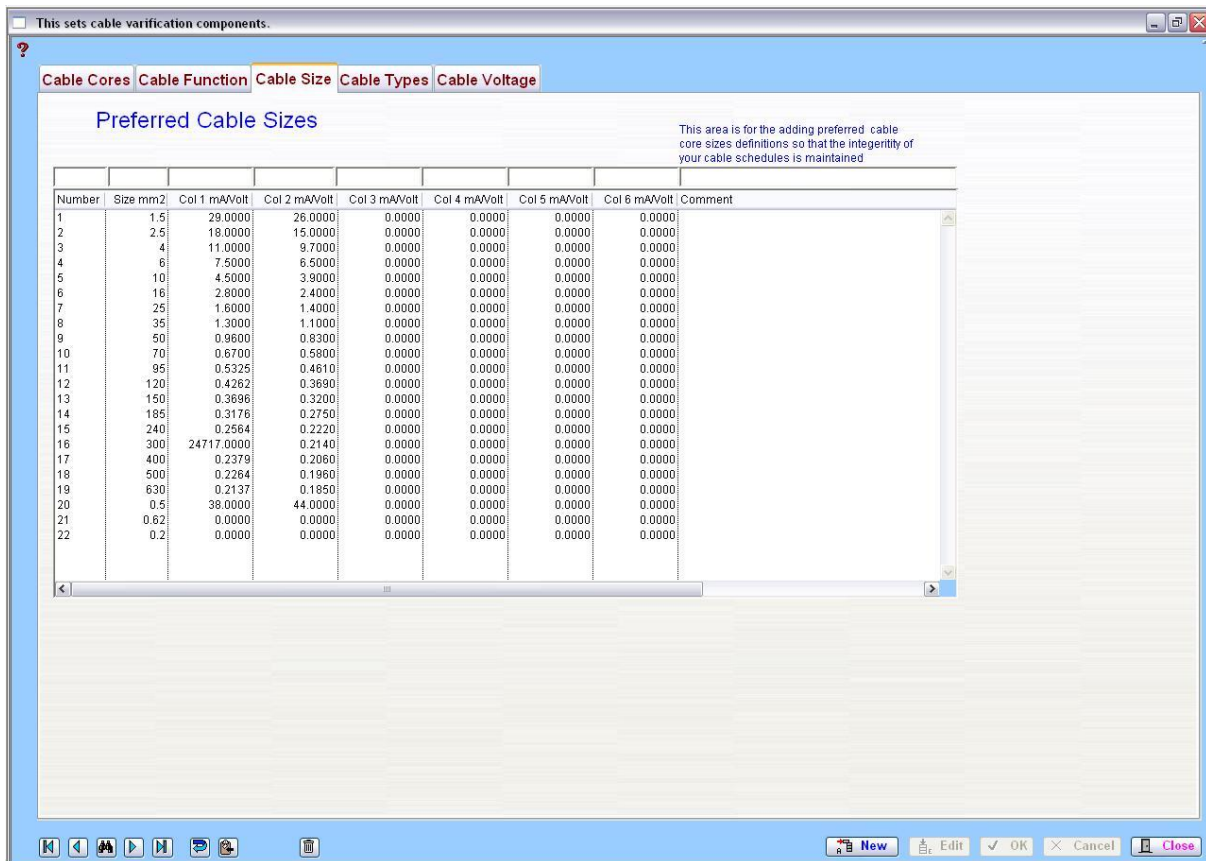
1.11.2 Cable Functions

This are is for the adding cable functions such as Instrumentation, Power, Lighting, High voltage etc.



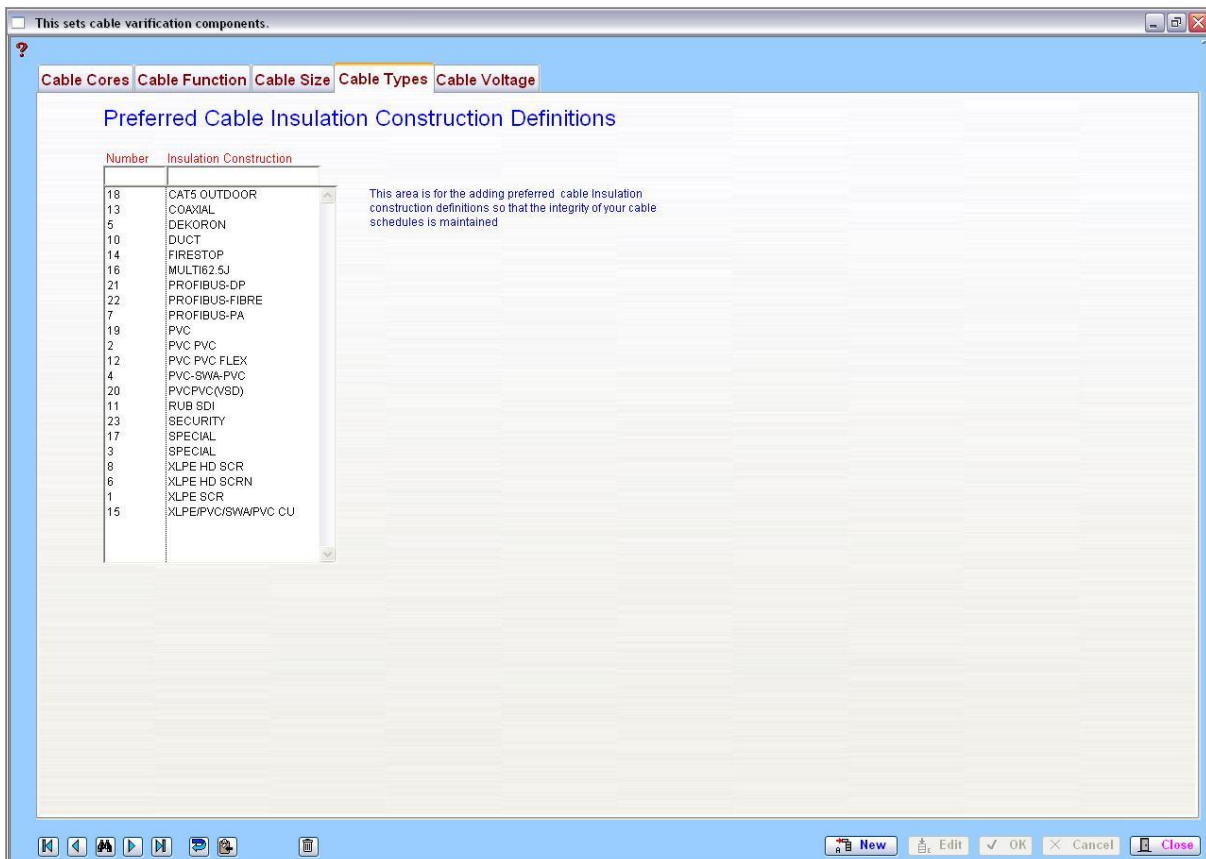
1.11.3 Cable Sizes

This area is for the adding preferred cable core sizes definitions so that the integrity of your cable schedules is maintained.



1.11.4 Cable Types

This area is for the adding preferred cable insulation construction definitions so that the integrity of your cable schedules is maintained.



1.11.5 Cable Voltage

This area is for the adding preferred voltage of the cable so that the integrity of your cable schedules is maintained.

