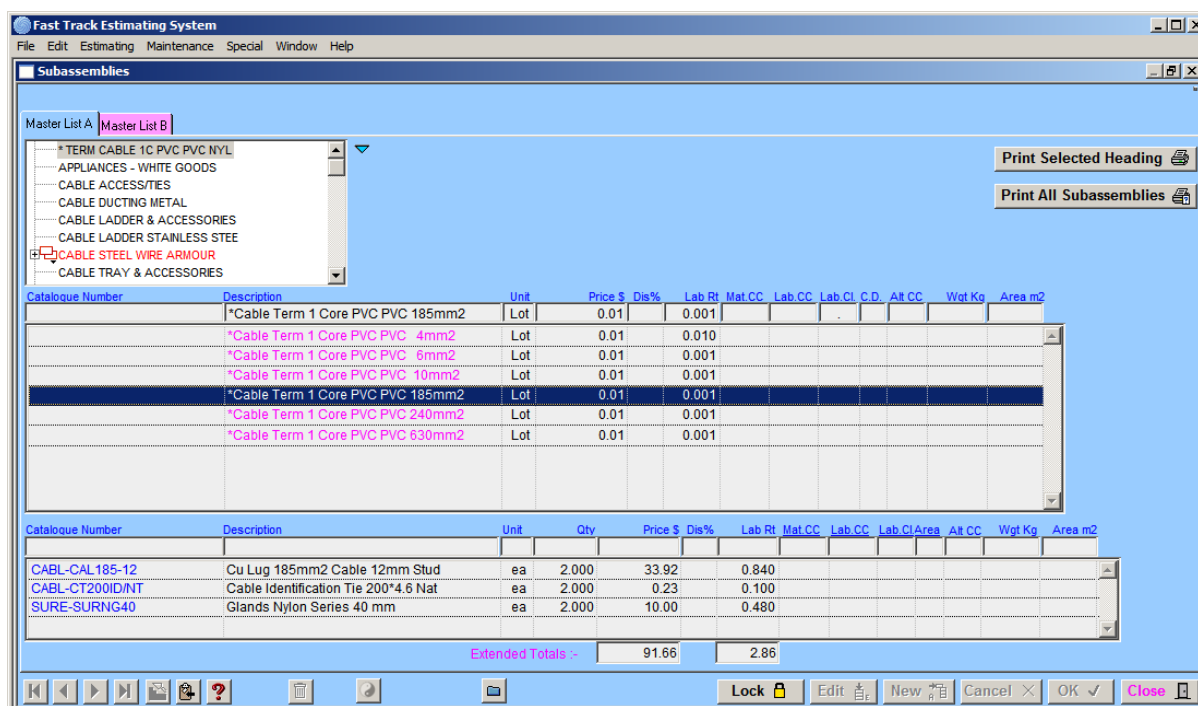


## 8.3 Sub-Assemblies

Sub-Assemblies are other records that can be attached to Master List records, so when the Master List record is written to the Estimate the attached records are automatically read as well.

This, for example, is used when a Cable Termination 4C+E PVC PVC is entered, the pre-selected glands, crimp lugs and lock rings are read in. This saves looking up charts and other cumbersome activities in the estimating process.



### How to add Sub-Assemblies

This is all carried out in the above window, a step by step guide of how to do this follows:

#### Step 1

Select the item from the **“Master List”** that you require attaching the sub-assemblies to and click on **“Lock”** this should change to **“Unlock”**. The item from the **“Master List”** will remain in the top record bar across the top to remind you what you are adding sub-assemblies to. If there are any sub-assemblies already attached they would already be displayed in the bottom list field.

#### Step 2

You can now attach sub-assemblies to the locked item from the **“Master List”** or do a manual entry by clicking on the now active button **“New”**. Type in your description or click on an item from your **“Master List”**, then enter in the other details such as Quantities, Discounts and Labour Rates. Press the **“OK”** button and the item should be transferred to the bottom display list.

Repeat the process if required.

The user can attach almost infinite amounts of sub-assemblies to a **“Master List”** record.

### Step 3

When you have finished attaching sub-assemblies to the “**Master List**” record, click on the button “**Unlock**”, this unlocks the record.

If you require seeing if there are any items attached to the “**Master List**” record, double click on a Master List record and the “Sub-Assemblies” will be displayed in the sub-assemblies list field.

The items displayed in sub-assemblies, for example, would be brackets and labels etc, as mentioned previously.

The program will enter the “Sub-Assemblies” automatically into the estimate complete with the optional multiplication factor. If the “Sub-assemblies” are not needed they can be deleted or edited like any other record, this feature can save the user time.

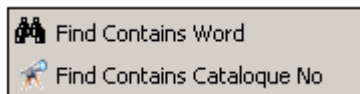
### Rule 1

If the record has sub-assemblies attached and you try to modify catalogue numbers or descriptions, access will be denied. If the Master List item has sub-assemblies attached and you delete the item this will also eliminate the sub-assemblies attached to that “Master List” record.

### Rule 2

The item must be in the “Master List” or a manual entry.

### Right Click Menu



The first function is Find Contains Word. This function allows you to search for a specific record by using words contained in the description.

The second function is Find Contains Catalogue Number. This function allows you to search for a specific record using catalogue numbers.



The holds the selected subassemblies in memory in a list awaiting for pasting.



When this icon is not dull, then the List held in memory can be pasted.

### TIPS

- When attaching items from the “Master List”, the items should be tied to the Price File Maintenance System, so pricing is updated automatically.
- When you are adding “Sub-Assemblies” to items in the “Master List”, for example, a 20 Core + Earth 1.5mm<sup>2</sup> Cable Termination, set it up by creating a new “Master List Heading” called “Terminations Control Cables”. Then create all the control cable sizes etc, 6 core to 50 core 1.5mm<sup>2</sup>, however when you are creating the various sizes use a “ \* ” at the start of the description, that way it will not be flagged up when you run the “Check Estimate” procedure.

You can add into the description codes, such as “+ Sub A”, so when you are adding records to your estimate you will know you’re getting more than one record added to the estimate.

---

## Notes

---

## Notes