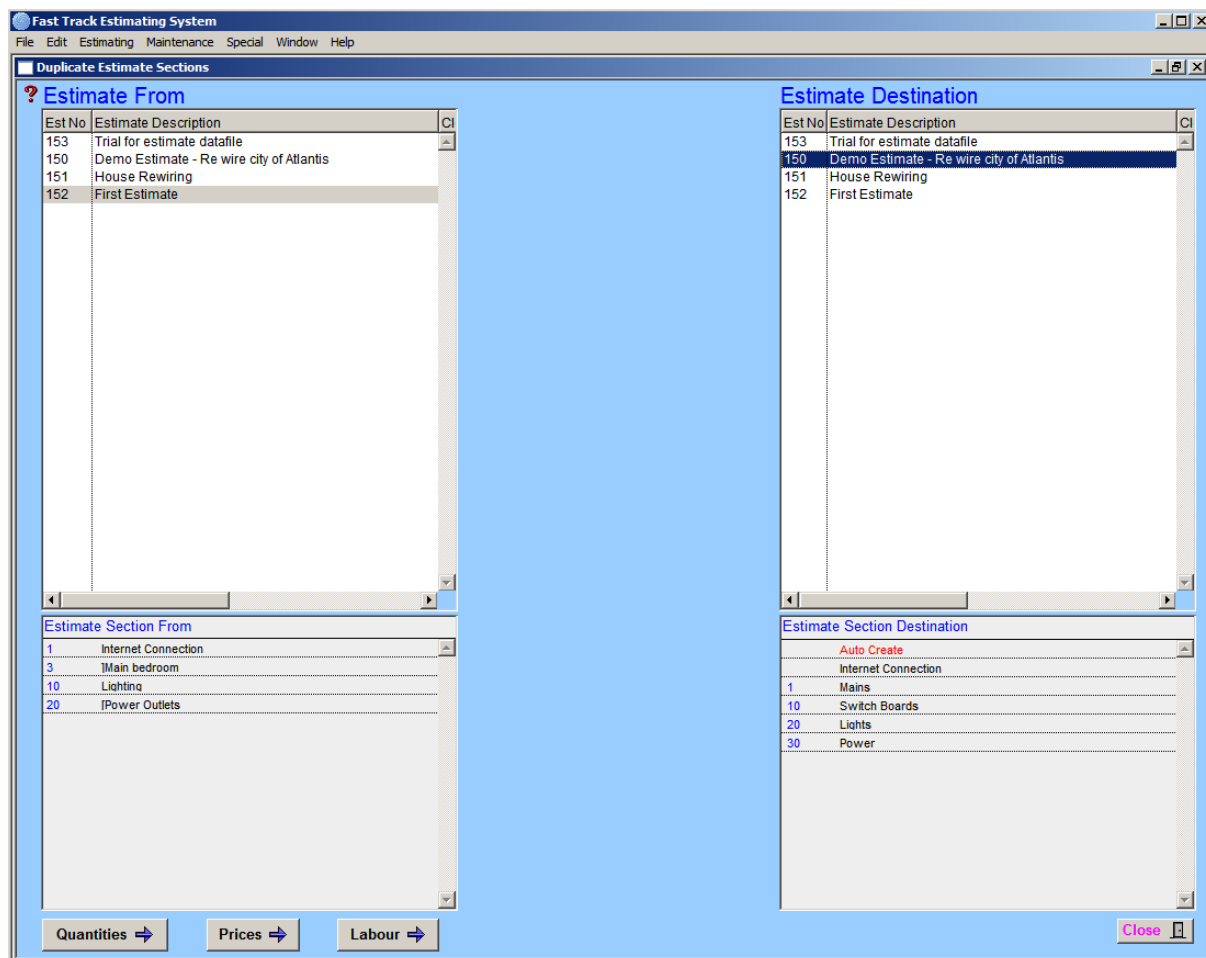


Section 7

7.3 Duplicate Estimate Sections



Operation

Create new sections in the estimate receiving the duplications, (refer “**New Sections**”).

Top screens display current estimates, select required sections in both. The cursor becomes a hand when in the section screens, highlight the “**Section Destination**” required, click section required in “**Estimate Section From**”, and drag across to the highlighted item, release to complete.

Quantities ➔

To duplicate the section without quantities, click “Quantities” button before duplicating section.

Prices ➔

To duplicate the section without prices, click “Prices” button before duplicating section.

Labour ➔

To duplicate the section without labour, click “Labour” button before duplicating section

Notes