

Kontrol Project



ATAD DATA

Chris Hughes & Associates

**3 Springwell Avenue
Springwood QLD 4127
Brisbane (Australia)**

Telephone: (07) 3208 6347
Mobile: 0409 263 349

Email: ataddata@bigpond.net.au

Website: <http://ataddata.com.au/>

Welcome to Kontrol Pro (Project)

Kontrol Pro runs on a Postgres SQL data base, Postgres is able to run on 3 platforms being Windows Macintosh and Linux.



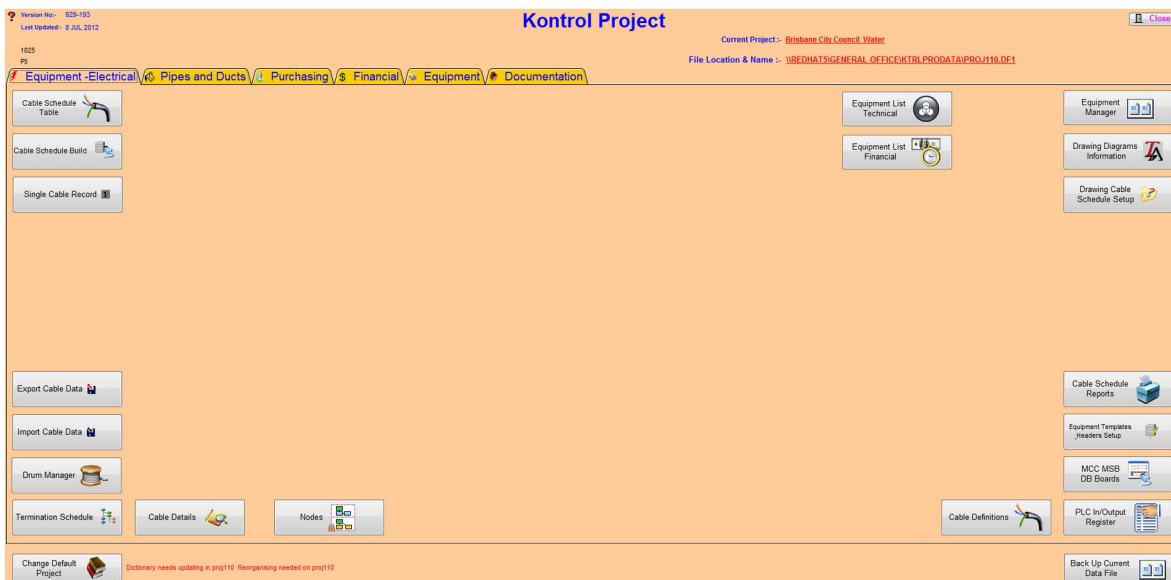
PostgreSQL

Postgres gives Kontrol Pro better preformance over LAN's and WAN's , and gives quicker back times.

How this Manual is arranged

The manual has been set out to provide detailed explanation on particular screen functions and is laid out based on the Navigation Screen – Tab Panels

- Equipment – Electrical
- Pipes and Ducts
- Purchasing
- Financial
- Equipment
- Documentation



Index

Page No.

SECTIONS

Section 1

Overview	1
1.1 The Basic Aim.....	1
1.2 Who Can use Kontrol Pro.....	1
1.3 How it Works.....	1
1.4 the System Intent.....	1
1.5 Document Management.....	1
1.6 System Requirements.....	1
1.7 Network.....	2
1.8 Software Configuration.....	2
1.9 This Manual.....	2

Section 2

System Information	1
2.1 The System	1
2.2 Fonts	2
2.3 Omnis Studio Specifications	2
2.4 How to Update your Program	2
2.5 License Agreement	3
2.6 Trade Names	6
2.7 Miscellaneous Information	7
2.7.1 Calculations	7
2.7.2 Explanation of Data Files, Files, Records, Fields, List & Tables	7

Section 3

Installation or Re-Installation	1
3.1 About Omnis Studio Runtime	1
3.2 Kontrol Pro	1
3.3 Windows Re-Installation	3
3.4 Serial Numbers.....	5

Section 4

Menu Bar	1
4.1 File Menu	1
4.2 Edit Menu	6
4.3 Site Manager Menu.....	8

Index

	Page No.
Section 5	
Redirect	1
Section 6	
Getting Started	1
6.1 Security.....	1
6.2 The Navigation Screen	2
6.3 Current Project	2
6.4 Change Default Project	2
6.5 File Location & Name.....	3

PROGRAM CATEGORIES

Panel 1 - Equipment

	Equipment - Electrical	1
1.1	Cable Schedule Table.....	2
1.2	Cable Schedule Build.....	15
1.3	Single Cable Record.....	16
1.4	Export and Import Cable Data.....	17
1.5	Drum Manager.....	19
1.6	Termination Schedule.....	20
1.7	Cable Details.....	22
1.8	Nodes.....	23
1.9	Cable Definitions.....	26
1.10	Equipment Manager.....	29
1.11	Drawing Diagrams Information.....	36
1.12	Drawing Cable Schedule Setup.....	37
1.13	Cable Schedule Reports.....	38
1.14	Equipement Templates Setup.....	39
1.15	PLC In/Output Register.....	41

Panel 2 – Pipes and Ducts

	Pipes and Ducts	1
2.1	Pipes and Ducts Schedule.....	2
2.2	Pipes and Ducts Preferences.....	3

Panel 3 - Purchasing

Index

	Page No.
Purchasing	1
3.1 Description Purchase Orders.....	2
3.2 Multiline Purchase Order.....	5
3.3 Order Review.....	9
3.4 Suppliers.....	10
Panel 4 - Financial	
Financial	1
4.1 Report Duration.....	2
4.2 Task Breakup.....	3
4.3 Progress Claims.....	4
4.4 Progress Reports.....	5
Panel 5 - Equipment	
Equipment	1
5.1 Parent Register.....	2
5.2 Train.....	3
5.3 Area Register.....	4
5.4 Tag Type Register.....	5
5.5 Expanded Tag Register.....	6
5.6 MCC MSB DB Boards.....	7
Panel 6 - Documentation	
Documentation	1
6.1 Documentation Register.....	2
6.2 Time Sheets.....	5
6.3 Variations.....	7
6.4 Documentation Generator.....	11
6.5 Mail Log.....	12
6.6 Data Utilities.....	14
6.7 Staff Details.....	18
6.8 Address Book.....	20
6.9 Post Codes.....	24
6.10 Administration.....	26
6.11 Password.....	27
6.12 View Letter Head.....	28
6.13 Company Info.....	29
Navigation Screen 1	
Change Default Project	1
7.1 Set Project Default.....	1
7.2 Project Details.....	2
7.3 Project Summary.....	2

7.4 Backup Locations.....3

Navigation Screen 2

Backup Current Data File.....1
8.1 Backup Current File Data1