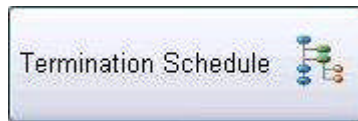


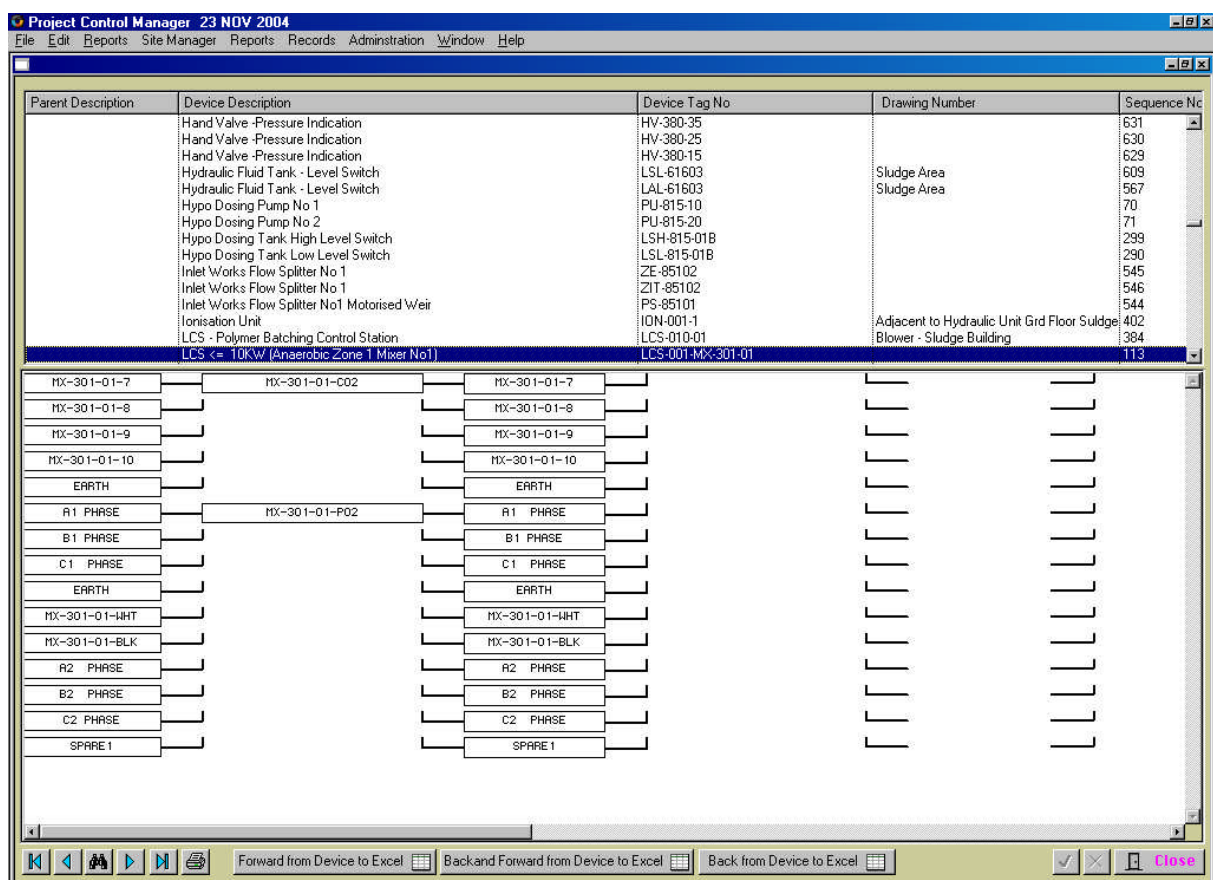
## Category 1

### 1.6 Termination Schedule



Cable terminations are built through the 'Cable Schedule' Module through the 'Termination' window. Every cable needs to be terminated. Refer to Module 6 – Cable Schedule.

Once the 'Cable Schedule' has been completed you can then complete the 'Termination Schedule' on your multicore control cables.



The top part of the screen shows all equipment listed in the 'Equipment Manager'. Refer to Module 1.10 – Equipment Manager.

When a cable has been terminated, click to select a cable and the termination schedule will be shown in the diagram at the bottom section of the screen.

The 'termination schedule' can now be imported into an Excel Spreadsheet ready for printing. There are three (3) methods available for printing out 'Termination Schedules', these are: - Forward from Device to Excel, Back and Forward from Device to Excel and Back from Device to Excel.



The Excel Spreadsheets can be copied and pasted into various documents and used for final as built 'termination drawings'.

#### Forward from Device to Excel

To print forward from the Device click on 'Forward from Device to Excel' button. The system will automatically open an Excel Spreadsheet and print out the 'Termination Schedule' for the selected cable. When schedule has been completed the system will ask if you wish to save. Click 'YES' to save and 'NO' to cancel.

Should you select 'YES' the system will automatically save the schedule to the designated file location path selected in the 'Change Default Project' Module – 'Back Up Location' Tab. Refer to Module 2 – 'Change Default Project'.

#### Back and Forward from Device to Excel

To print the entire device schedule click on 'Back and Forward from Device to Excel' button. The system will automatically open an Excel Spreadsheet and print out the entire 'Termination Schedule' for the selected cable. When schedule has been completed the system will ask if you wish to save. Click 'YES' to save and 'NO' to cancel.

Should you select 'YES' the system will automatically save the schedule to the designated file location path selected in the 'Change Default Project' Module – 'Back Up Location' Tab. Refer to Module 2 – 'Change Default Project'.

#### Back from Device to Excel

To print back from the Device click on 'Back from Device to Excel' button. The system will automatically open an Excel Spreadsheet and print out the 'Termination Schedule' for the selected cable. When schedule has been completed the system will ask if you wish to save. Click 'YES' to save and 'NO' to cancel.

Should you select 'YES' the system will automatically save the schedule to the designated file location path selected in the 'Change Default Project' Module – 'Back Up Location' Tab. Refer to Module 2 – 'Change Default Project'.



