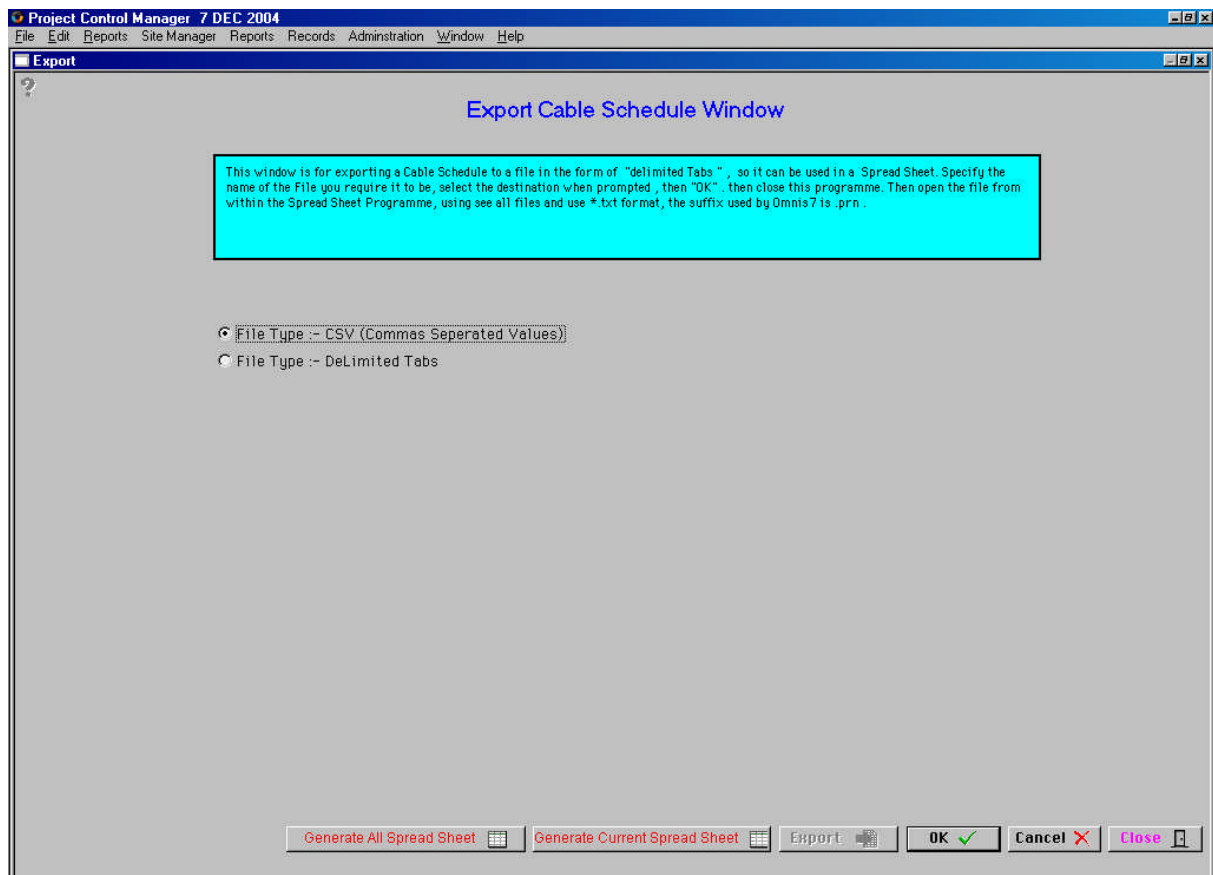


Category 1

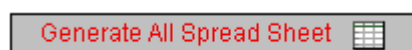
1.4 Export and Import Cable Data



Export Cable Data



This window is for exporting Cable Schedule to a file in the form of “Delimited Tabs”, so that it can be used in a spreadsheet. Specify the name of the File you require it to be, select the destination when prompted, then “OK, then close this program. Then open the file from within the Spreadsheet programme, using see all files and use*.txt format, the suffix used by Omnis7 is .prn



This button generates a spreadsheet with all records in the data bases including Current, Deleted or on Hold records.



While this button generates a spreadsheet of all the current records.



This button will export the cable schedule in Delimited tab or Comma separated values so the information can be imported into other computer systems.

Import Cable Data

This Window is for importing a Cable Schedule that was generated in a spread sheet. The spread sheet must have been saved in the form of a text file. Click on Import and when prompted select the file from the Floppy Disc or Hard Disc, then select Text file type, then "Ok". The first record will be read, "Yes" if correct or "No" to abort. If "No" adjust the spreadsheet to suit.



This Button imports the cable via the Dynamic Data Exchange (DDE).



While this button allows for information to be imported into the system.