

## Section 3

### Installation or Re-Installation

This section contains information about your Omnis Studio Runtime Program. It also assumes that you have encountered problems, for example, your computers hard disc has had a fatal crash and you are trying to rebuild your system.

The original system came complete packed on a CD with short cuts and fonts, this data will now be out of date.

The package also contained a back up CD and either a 185Mb mini CD containing fonts, your library files and paperwork with recommendations for them to be placed into safe storage.

#### 3.1 Software Package Contents

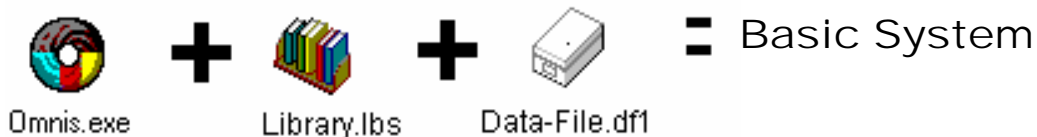
The Microsoft Windows package should have the following articles of equipment:-

- Manual (1 only)
- Disc CD (1off) containing Omnis Studio Runtime
- Disc (1off) containing the following fonts:- (07\_list, 07\_sysm, 07\_pswd & 07\_table)
- Disc (1off) containing the following files:- Copious.lbs

#### 3.2 About Omnis Studio Runtime

The Omnis Studio is a Database type program; the version that is marketed is called Omnis Studio Runtime. The runtime version works in conjunction with another program module called an Omnis Studio Library. The Library can not have its structure or procedures modified at a runtime level. Any modifications have to be made on a full Omnis Studio developer version. Modifications can only be made when the appropriate passwords are entered. The other requirement you need is a data file, this is as the name suggest, where you keep your information (data).

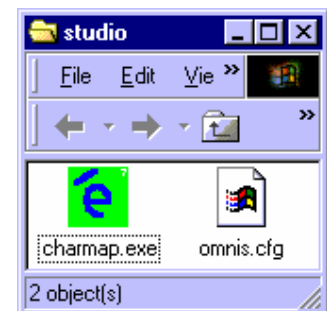
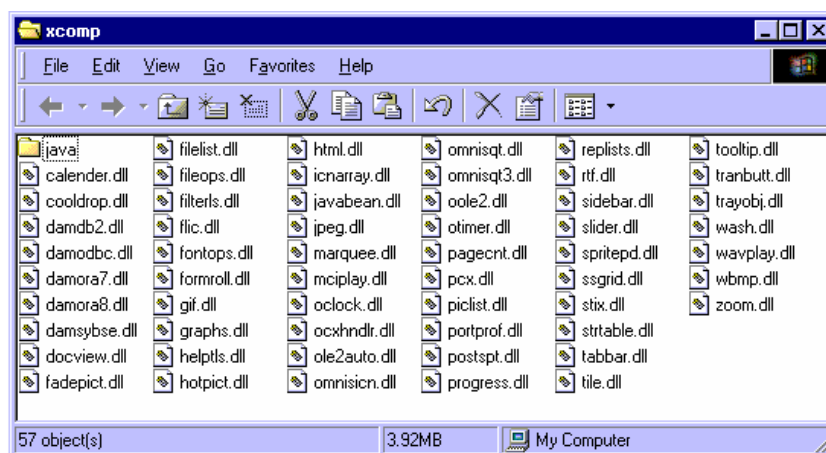
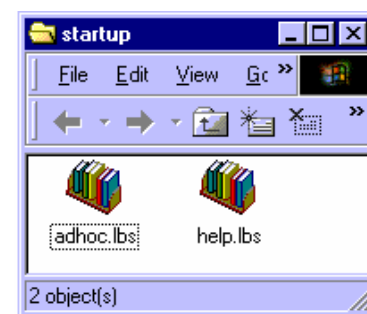
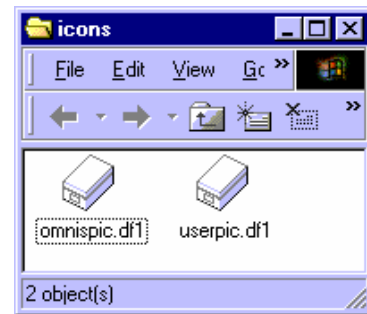
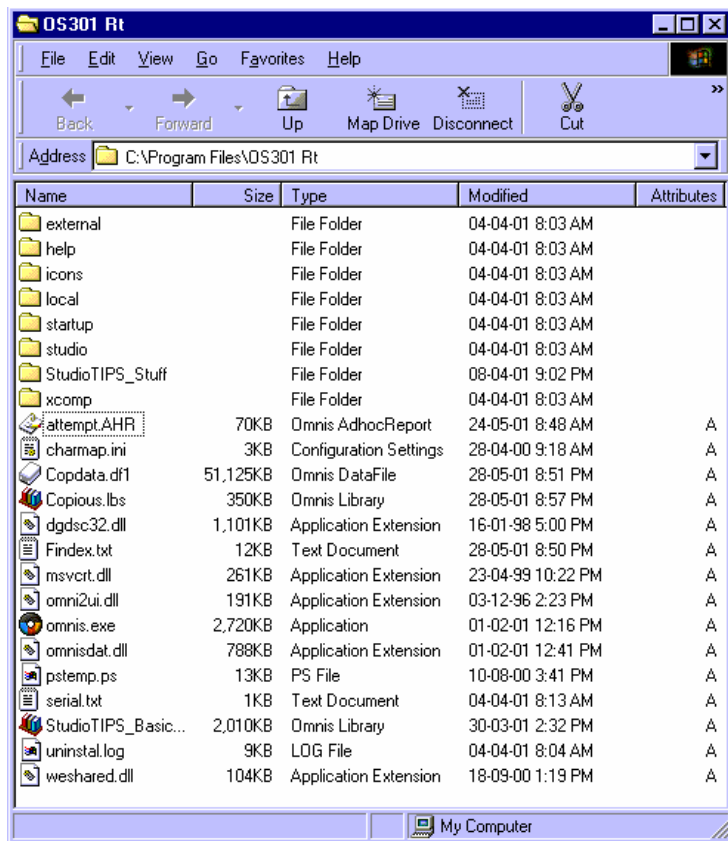
So when you have the folder that looks like the following you have your basic system.



When Omnis Studio system is developed there are other files that are involved in your program. A graphic showing more details follows.

### 3.3 Smart Price

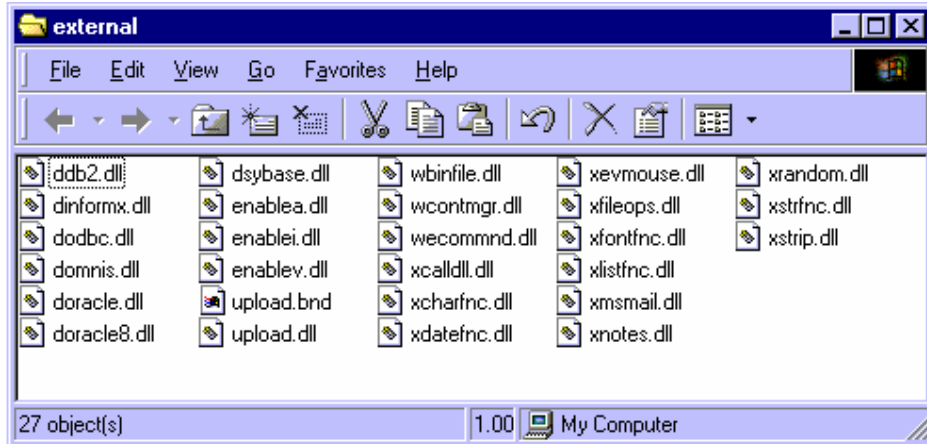
Your Smart Price System should contain the following files under C:\Program Files\OSXXRT.



All of the files shown above have important functions, some of the functions are critical to the operation of Fast Track and Smart Price. A brief description is given that may help diagnose problems should they occur:

- Omnis.exe      Omnis the executable file the database engine (essential).
- Dgds32.dll      Graphics engine for producing graphs.
- Omnis2ui.dll      Dynamic Link Library (.dll) resource file.

- Omnispic.df1 Data file contains all graphics for the buttons etc.
- Copdata.df1 Data file contains all the information from Copious Data Pty Ltd.
- Copious.lbs Library file that controls the way the database engine works. This file is “Smart Price” and controls the interaction between the above mentioned files such as the data files and the Omnis.exe files, etc. This file is written by Atad Data and when changes to the program are made, must be replaced.



The “External” folder and files are located within the OSXXRT folder and have the following functions:-

- Fileops.dll + Replace.dll+ Getfiles.dlll - are Dynamic Link Library (.dll) and are for file operations.
- Graphs.dll - is a Dynamic Link Library (.dll) for linking the graphing operations together.

The remainder are .dll files and are for various other functions.

### 3.4 Windows Re-Installation

If your hard disc has crashed and is beyond repair, a new one should be installed ready to rebuild your Smart Price or Fast Track Estimating System. Please find the following steps to re-establishing your system.

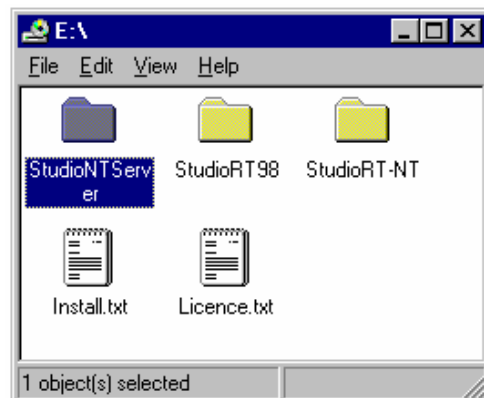
To start with, you must be in Microsoft Windows, have about 100 Meg of spare disc space and have your back up disc removed from your safe storage area and ready to go.

#### Step 1

(Install your Omnis Studio Runtime)  
Get your Omnis Studio Runtime CD ready.

#### Step 2

Open the CD, the following window should appear, make a selection of the Runtime based on the operating system you have.



### Step 3

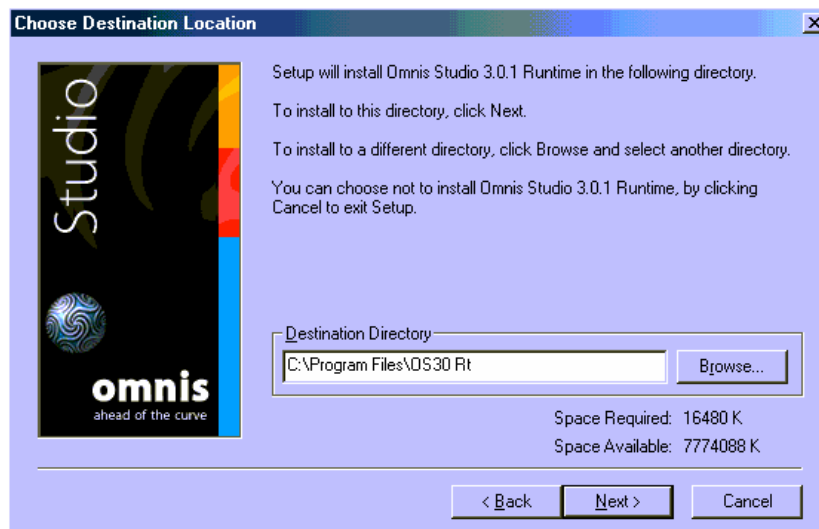
Another window will open when you click on your operating system. This button starts the Installation procedure running.



### Step 4

Various windows will open such as 'Accepting Legal Responsibility' for the Omnis Studio Runtime. Advance through these by using the **"Next"** button.

The next important window that will open is the one following. Please set the following command line "C:\Program Files\OSXXRT" to the latest version you are installing instead of the one shown.



Click on the **"Next"** button and the installation process will continue.

### Step 5

The install asks various other questions about shortcuts, answer **"Yes"**, you can modify these later.

The install program will prompt you to restart your computer, this should be done to complete the installation of the Runtime.

### Step 6

The next step is to load the Library files. These could have been updated since your initial installation of the program. Find the latest library file updates, these will have to match your data file. Each disc should be date stamped.

To load, simply copy from the mini CD onto the hard disc drive into the folder called "C:\Program files\OSXXRT" as you would with an update.

**Please note:** If copying from a CD the properties of that file will have to be changed from "Read Only".

### Step 7

Once the **"Install program"** has completed its task, you need to set up your icons as per the following instructions:

- Right click on the **"Desk Top"** then click on **"New"**, then click on **"Create Shortcut"**.
- When the 'Shortcut Wizard' window appears, click on the button called **"Browse"**.
- Find **'My Computer'**, click on C: Drive and locate **'Program Files'** and find the folder called **"OSXX RT"** (the latest version) then find the file called **"Copious"**.
- Click on the **"Next"** button and enter the name **"Fast Track Estimating System or Smart Price"**.

### Step 8

This step may be necessary if you are unable to locate the fonts. There is a disc containing the following fonts: (07\_list, 07\_sysm, 07\_pswd & 07\_table)

These fonts have to be copied and pasted into the **"Fonts"** folder, located in the Windows folder.

### Step 9

The program is almost ready to go, however, this is dependent on what backup system was implemented, if you backed up the file Copdata.df1. This file may be located on your C:Drive or on your Server. If unsure check with your Network Administrator.

### Finish

If not go to Step 10.

### Step 10

Now enter the Fast Track program, you will be asked for a **"Password Number"**, enter Level 1.

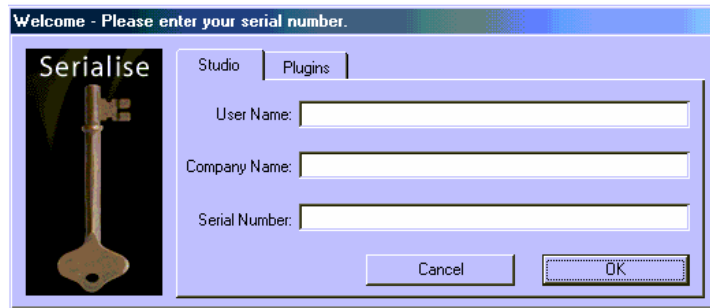
The library file is looking for a data file, the **"Change Data File"** window will open, because the data file is gone you will have to click on the button called **"New Data File"** a new window will appear. Now create a new data file called **"Copdata.df1"** and save.

You should also open the **"Smart Price Pricing System"** and repeat the 'create new data file' procedure and call it **"Copdata.df1"** (or Term3.dfl when in Fast Track).

This system should now be ready to run, leave the setting at Default, your single user Omnis will launch in single user mode. Ask your Omnis System Administrator which selection is appropriate for you.

### Step 11

When Omnis Studio runs for the first time it needs to be serialised, the following screen will appear.



Enter the **“User Name”** this can be for example, Estimator No.1, and **“Company Name”**. The **“Serial Number”** is found in section 3.5 Serial Numbers in Section 3, page 6 of your manual.

### 3.5 Serial Numbers

Your Program Serial Number is:-	<input type="text"/>
Your Runtime Omnis Studio Program Number is:-	<input type="text"/>
Your Password (Level 1) is:-	<input type="text"/>
Your Password (Level 2) is:-	<input type="text"/>

When the program starts, the operator will be asked for a password, enter a password that has been issued and then just click **“OK”** or press **“Return”**, this restricts access to the system.

The passwords can be changed upon request to Atad Data and should be requested when ordering. There are two (2) Levels of passwords. Level 2 and higher is for every day use. Level 1 is for the System Administrator and allows for restricted use.